

To the members and officers of
Local Union 164



We are proud to be affiliated with
your organization and we truly
appreciate the continued support
and loyalty you always offer.

WELCOME TO OUR
ANNUAL GOLF OUTING

RETIREES' ASSOCIATION



IBEW LOCAL UNION 164

SEPTEMBER 26, 2011
OVERPECK GOLF COURSE
TEANECK, NEW JERSEY

September 26, 2011

Dear Friends:

Our annual golf outing is a charity event. We have, over the years, raised money for Habitat for Humanity, Brave Bold & Courageous, and for the children of a deceased brother.

We started a scholarship fund to benefit the children and grandchildren of the members of the Retirees' Association and we have been able to award \$30,000 in scholarships to our recipients in just two years. The Scholarship Fund is now our primary concern. With the participation of our members and the generosity of the sponsors, we hope to be able to continue to give financial assistance to our members' families.

In 2009, we began awarding the prestigious GREY JACKET (get it? "retirees")

2009 - co winners: Keith Pedone & Brendan McBride
2010 - winner: Brendan McBride (this guy is good!)

We hope you all enjoyed yourselves today and we look forward to seeing you again next year! Thank you all for participating in our 11th annual golf outing.

GOLF OUTING COMMITTEE

Ray Skinner, Fund Raising Chairman
Tom Barry, Event Coordinator
Jerry Rider, Signage Coordinator

**CONGRATULATIONS TO THE
2011 SCHOLARSHIP RECCIPIENTS**

AMANDA ABBOT

Granddaughter of Brother Salvatore Rizzo

KAYLEIGH BURKE

Granddaughter of Brother Ed Sabbo

LAURA HOPKINS

Granddaughter of our late Brother
Bob and Doris Hopkins

MATT OLSON

Grandson of our late Brother
John and Angela Nappi

KAITLYN TRYTHALL

Granddaughter of Brother Tom Manzi

We would like to thank the Retirees Association of IBEW Local Union #164 for the scholarships won and hope for continued success in years to come.

**GRANDPARENTS OF THE 2011
SCHOLARSHIP RECIPIENTS**

DOUBLE PLATINUM SPONSOR

(SPONSORED 20 HOLES)

L. U. 164 RETIREES' GOLF LEAGUE

RAY SKINNERTreasurer, Tee Times

BOB LAGATUTTA.....Handicapping, Statistics

AL FIORE

BILLY PRICE

JIM HOLMES

TOM BARRY

BOB BARTON

RICH DONALDSON

GRANT BERGMAN

CARL VOORHEES

BUDD DELORENZO

ARTIE BERGMAN

HOWIE CUBBERLY

LUIS HERNANDEZ

HOWIE HILL

KEVIN DOYLE

JIM MEYERS

JOHN LILLIS

BOB COLLINS

GENE BEJOT

JOE CRAWFORD

SIL PERRI

JERRY RIDER

BOB SEARS

DAN SHADER

PLATINUM SPONSOR

New Jersey State Building & Construction Trades Council

~Over 100 Years Strong~

WILLIAM T. MULLEN, *President*

DAVID CRITCHLEY, *Secy-Treas.*

Vice Presidents

Morris Rubino
Iron Workers
Joseph Egan
Electrical Workers
Joseph Demark, Jr.
Sheet Metal
Donald DiLeo
Teamsters
Edward Fedorko
Insulators & Allied Workers
Raymond Pocino
Laborers
Richard Tolson
Bricklayers & Allied Crafts
Marc Gallo
Plasterers & Cement



Robert Critchley
Roofers
Frederick McCourt
Elevator Constructors
Daniel McGraw
Operating Engineers
Edward Latacz
Boilermakers
Harry J. Harchetts
Painters & Allied Trades
Michael Capelli
Carpenters
James Kehoe
Pipe Trades

**BUILDING CAREERS
BUILDING COMMUNITIES
BUILDING NEW JERSEY**

77 Brant Avenue - Suite 102, Clark, New Jersey 07066
Phone: (732) 499-0100 Fax: (732) 499-0150 Website: NJBCTC.org

PLATINUM PLUS 1 HOLE SPONSOR



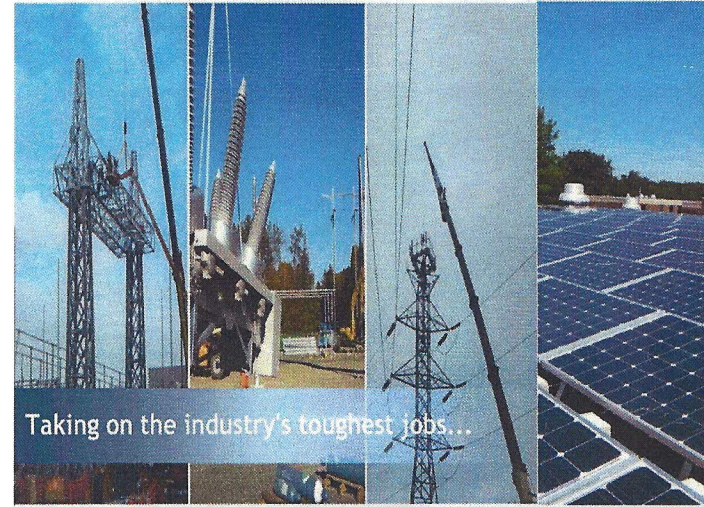
Seix Investment Advisors LLC
www.seixadvisors.com

Proud Supporter of the

I.B.E.W. Local Union #164
Retirees Association Scholarship Fund

Seix Advisors is a leading institutional fixed income manager with \$26 billion in assets under management. Our clients represent a prestigious list of blue chip clients that include Taft Hartley Funds, Corporations, Endowments, Foundations, Public Funds, Medical Centers, Religious Organizations, Fund of Funds, and Family Offices.

PLATINUM SPONSOR PLUS 4 HOLES



Taking on the industry's toughest jobs...

www.jblelectric.com

3001 South Clinton Ave
South Plainfield, NJ 07080
908.462.0093
Fax: 908.462.3647

Divisions & Services

Utilities

Distribution|Emergency Restoration|
Lighting Maintenance|Substation
Construction|Transmission|

Wireless

Cellular Modification|Design and
Installation|Maintenance|New
Construction

Industrial

Homeland Security|Port Authority

Solar & Clean Energy

Commercial|Industrial

JBL Electric is a specialty Utility Contractor serving the North East and Mid Atlantic Region's. We believe that the work we do is important for our regions economic and environmental future. This is the reason that doing the job right, on time, and within budget are core values at JBL Electric.

For over 18 years we have been building our reputation with our commitment to safety, innovative work practices and experience on the jobsite. These values, in conjunction with our management philosophy of exemplary leadership, integrity, customer satisfaction and industry involvement have made JBL Electric one of the leading electrical contractors in the field of Substation Construction, Transmission and Distribution, Clean Energy, and Wireless Communications.

Located in South Plainfield, New Jersey, JBL Electric proudly serves our customers throughout the North East and Mid Atlantic regions as well as providing Storm Restoration efforts throughout the entire country.

Our standard of quality workmanship, experience, knowledge and dedication to see the job through regardless of its complexity - with an emphasis on a team approach - gives JBL Electric the edge over the competition.

James B. Leary



PLATINUM SPONSOR



CAPITAL MANAGEMENT

Proudly Supports

*The I.B.E.W. Local Union #164
Retirees Association
Scholarship Fund*

*The Impact You've Made in these Scholars'
Lives is Truly Great!*

ICC Capital Management, Inc.

Kevin Quinn
John Larkin
Richard Nolan

675 Third Ave., Suite 1805, New York, NY 10017 Tel: (212) 395-9690

PLATINUM SPONSOR

**Still the best choice
for labor.**



Horizon Blue Cross Blue Shield of New Jersey



**Labor Sales and Services:
1-973-466-5342**

An independent licensee of the Blue Cross and Blue Shield Association.
® Registered mark of the Blue Cross and Blue Shield Association.
® and SM Registered and service marks of Horizon Blue Cross Blue Shield of New Jersey.
© 2011 Horizon Blue Cross Blue Shield of New Jersey.
Three Penn Plaza East, Newark, New Jersey 07105

PLATINUM SPONSOR

Smith Group

ASSET MANAGEMENT

Travis Briggs
Managing Director

ADDRESS 100 Crescent Court - Suite 1150
Dallas, Texas 75201

DIRECT 214.880.4612
TOLL FREE 800.582.3435
FAX 214.880.4640

EMAIL travis@smithasset.com
WEB www.smithasset.com

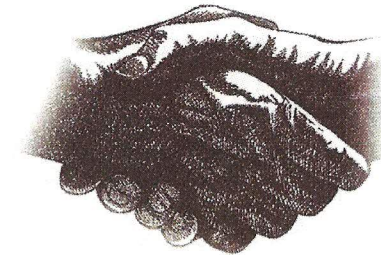
PLATINUM SPONSOR

Still the best choice
for labor.

HorizonSM



Horizon Blue Cross Blue Shield of New Jersey



Labor Sales and Services:
1-973-466-5342

An independent licensee of the Blue Cross and Blue Shield Association.
® Registered mark of the Blue Cross and Blue Shield Association.
® and SM Registered and service marks of Horizon Blue Cross Blue Shield of New Jersey.
© 2011 Horizon Blue Cross Blue Shield of New Jersey.
Three Penn Plaza East, Newark, New Jersey 07105

PLATINUM SPONSOR

Smith Group

ASSET MANAGEMENT

Travis Briggs
Managing Director

ADDRESS 100 Crescent Court - Suite 1150
Dallas, Texas 75201

DIRECT 214.880.4612
TOLL FREE 800.582.3435
FAX 214.880.4640

EMAIL travis@smithasset.com
WEB www.smithasset.com

PLATINUM SPONSOR



INVESCO Institutional
1166 Avenue of the America
New York, NY 10036

PLATINUM SPONSOR



**CONGRESS ASSET
MANAGEMENT COMPANY**

DANIEL J. CROSS
National Sales Manager

2 Seaport Lane ■ Boston, MA 02210-2001

p 800.234.4516 ■ 617.428.4305

f 617.737.4333

PLATINUM SPONSOR



INVESCO Institutional
1166 Avenue of the America
New York, NY 10036

PLATINUM SPONSOR



**CONGRESS ASSET
MANAGEMENT COMPANY**

DANIEL J. CROSS

National Sales Manager

2 Seaport Lane ■ Boston, MA 02210-2001

p 800.234.4516 ■ 617.428.4305

f 617.737.4333

PLATINUM SPONSOR



FABIAN & BYRN, LLC

Actuaries, Consultants & TPA Services

204 Eagle Rock Avenue

Second Floor

Roseland, NJ 07068

973-228-4200

Fax 973-228-4240



GOLD SPONSOR

NEW JERSEY STATE AFL-CIO

GOLD SPONSOR

Scholes
Electric & Communications
Kenneth J. Morris
Vice President

Cell: (201) 913-9194
Phone: (732) 562-1900
Fax: (732) 562-0900
KMorris@scholesonline.com
www.Scholesonline.com

1021 Centennial Avenue
Piscataway, NJ 08854
LIC BP #4319



GOLD SPONSOR

POWERING
NEW YORK &
THE WORLD

*Unity International Group—
delivering diverse technologies to meet
the most challenging needs of power,
information and facility structure.*

ELECTRICAL POWER
STRUCTURED CABLING
CRITICAL SYSTEMS
ELECTRICAL SYSTEMS MAINTENANCE
INFORMATION TECHNOLOGY

UNITY
INTERNATIONAL GROUP
65-45 FRESH MEADOW LANE • FLUSHING NY 11365
(718) 539-4900 • www.UnityIG.com

GOLD SPONSOR

PENN

CAPITAL MANAGEMENT

Navy Yard Corporate Center • Three Crescent Drive • Suite 400 • Philadelphia, PA 19112 • 215-302-1500

www.penncapital.com

Complete Capital Structure Analysis

GOLD SPONSOR

MSPC

Certified Public
Accountants and Advisors

An independent firm associated with

MOORE STEPHENS

SILVER PLUS SPONSOR



TORE ELECTRIC CO., INC.

452 Washington Avenue
Belleville, New Jersey 07109
(973) 759-3800

SILVER PLUS SPONSOR

BERGEN COUNTY BUILDING TRADES

SILVER PLUS SPONSOR

BROTHER HERB GARDNER

SILVER SPONSOR

MGK

Wealth Management

Michael G. Koch
Financial Consultant

144 Wild Azalea Lane
Skillman, NJ 08558
609-466-1384 office
www.mgkwealth.com
michael.koch@investfinancial.com

SILVER SPONSOR

Oliwa & Company

Certified Public Accountants

▪ Robert S. Oliwa, CPA, RMA
Principal

▪ 732-780-5106
Fax ▪ 732-780-5502

3 Broad Street
Freehold, New Jersey 07728-1742

roliwa@oliwaepas.com

SILVER SPONSOR

Robert A. Reiser



HUDSON ELECTRICAL CONTRACTORS, INC.

PO Box 505, Perrineville, New Jersey 08535

License #6822

Ph: 732-786-9001

Fax: 732-786-9004

Many thanks to the following golf courses that generously donated gift certificates for a foursome to play a free round of golf at their beautiful golf course:

**ROYCE BROOK GOLF
& COUNTRY CLUB**

PARAMUS GOLF CLUB

GALLOPING HILLS GOLF CLUB

**BERGEN COUNTY
DEPARTMENT OF PARKS**

SILVER SPONSOR

Alfonse V. Santaniello

SANTANIELLO ELECTRIC, LLC

1401 Witherspoon Street
Rahway, New Jersey 07065
(732) 815-1005

SANTANIELLOELEC@AOL.COM

DOUBLE HOLE SPONSORS

Tom Barry	Leon O'Droniec
Gene Bejot	Ray Skinner
John Comiso	Susan Solleder
John DeBouter, Pres, L.U. #164	Ken Sullivan
Jim Giesenhaus	Tom Sullivan
Jon Lawson	

Community Bank of Bergen County

Cooper Electric Supply Co.	Mehl Electric & Comm.
S & M Electric	Sheet Metal Workers Int'l L. U. #137

SINGLE HOLE SPONSORS

Keith Barfoot	John Lillis
Dennis Bartley	Jim McManus
Joe Crawford	George Prasch
Rich Dougherty	Jerry Rider
Bob Duthaler	Steve Roszek
Diane Elder	Ron Shingelo
Al Fiore	Carl Voorhees
Bob Lagatutta	
A.K.T.T. Financial Group	F.A.B.ulous Specialties, Inc.
-	Charles Pelesky, David Lerner Assoc., Inc.